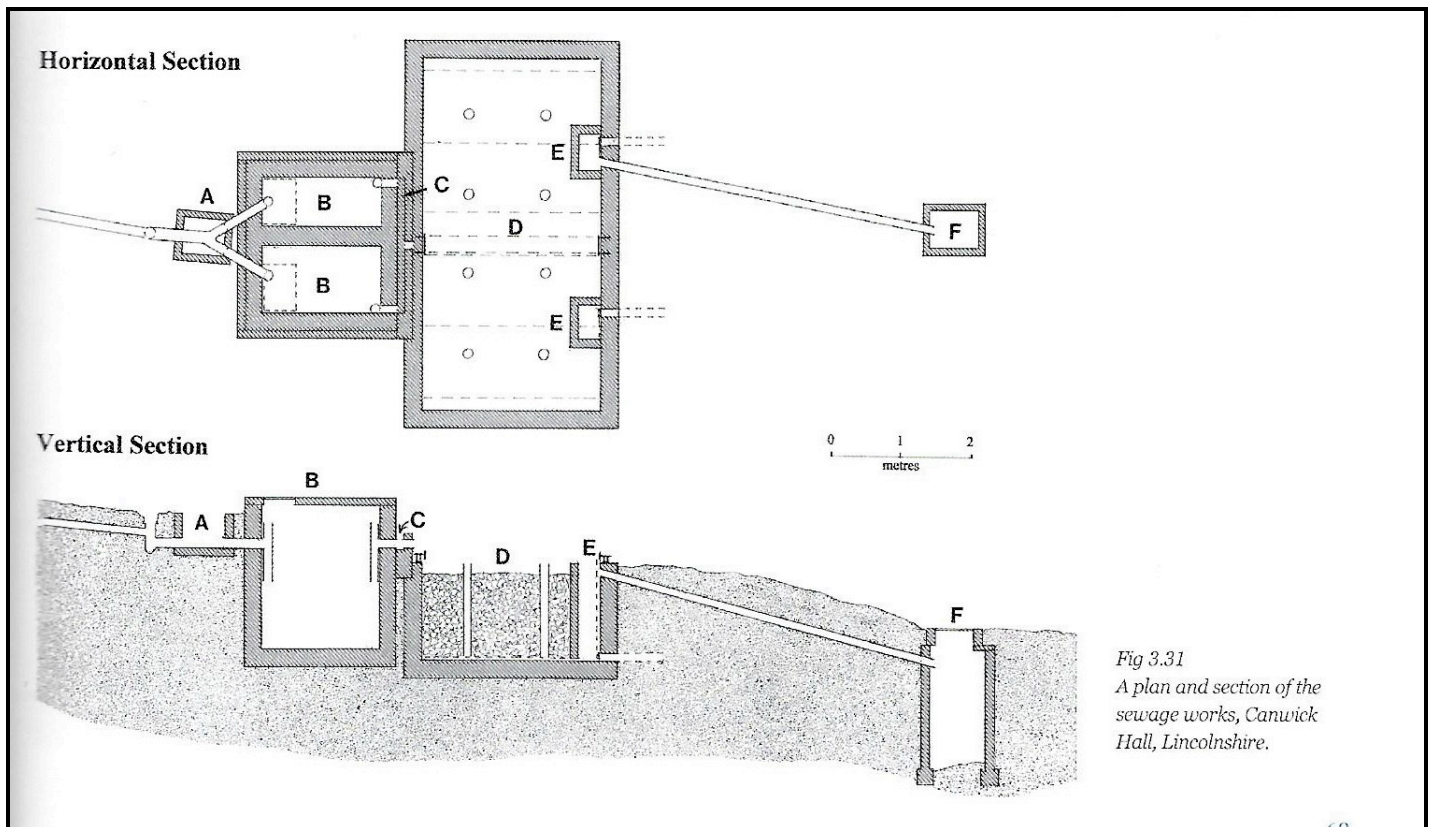


PLUMBING & SANITATION FROM EARLIEST TIMES

Historic England

1



**Selection of illustrations from Chapter 3
WATER SUPPLIES AND SANITATION
TECHNOLOGY IN THE COUNTRY HOUSE
Historic England 2016**



Technology in the Country House

Marilyn Palmer and Ian West

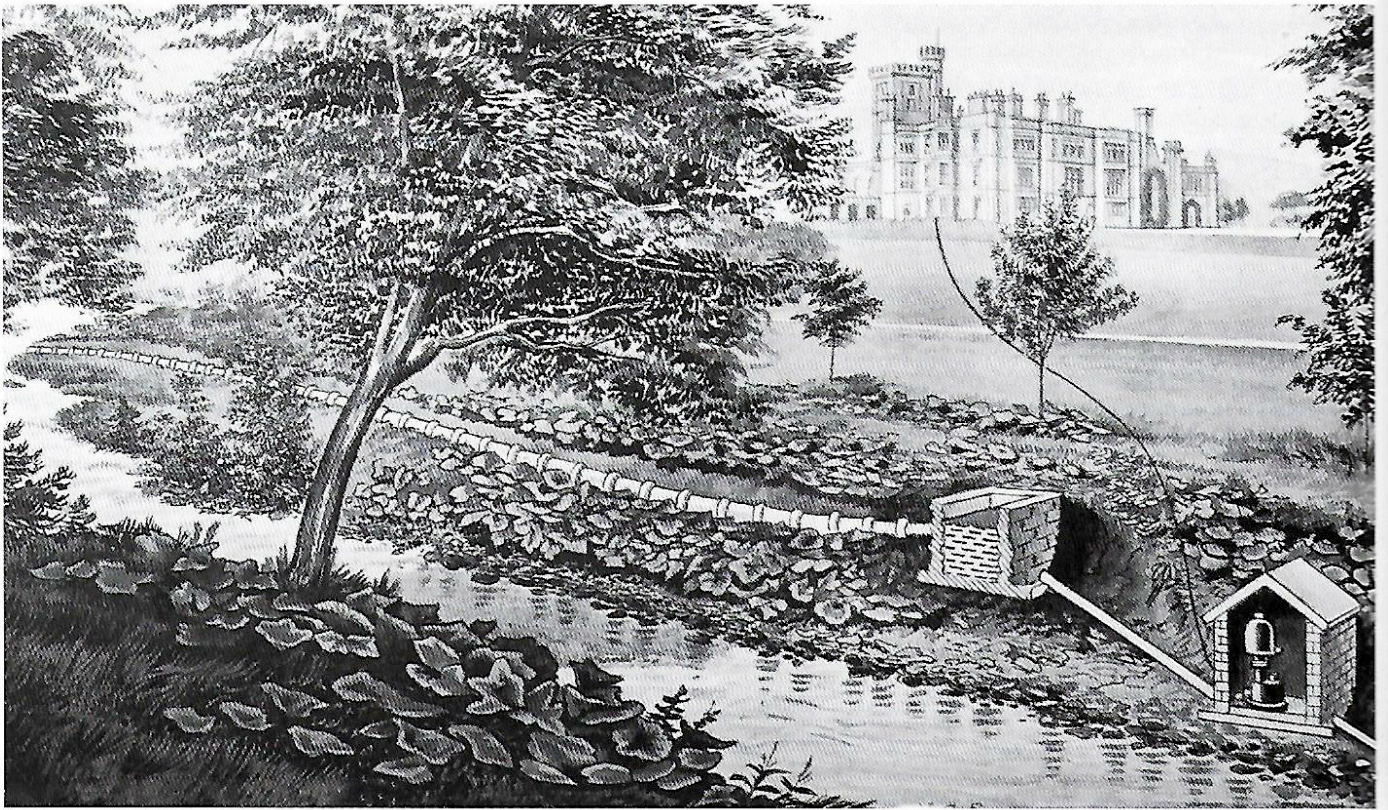
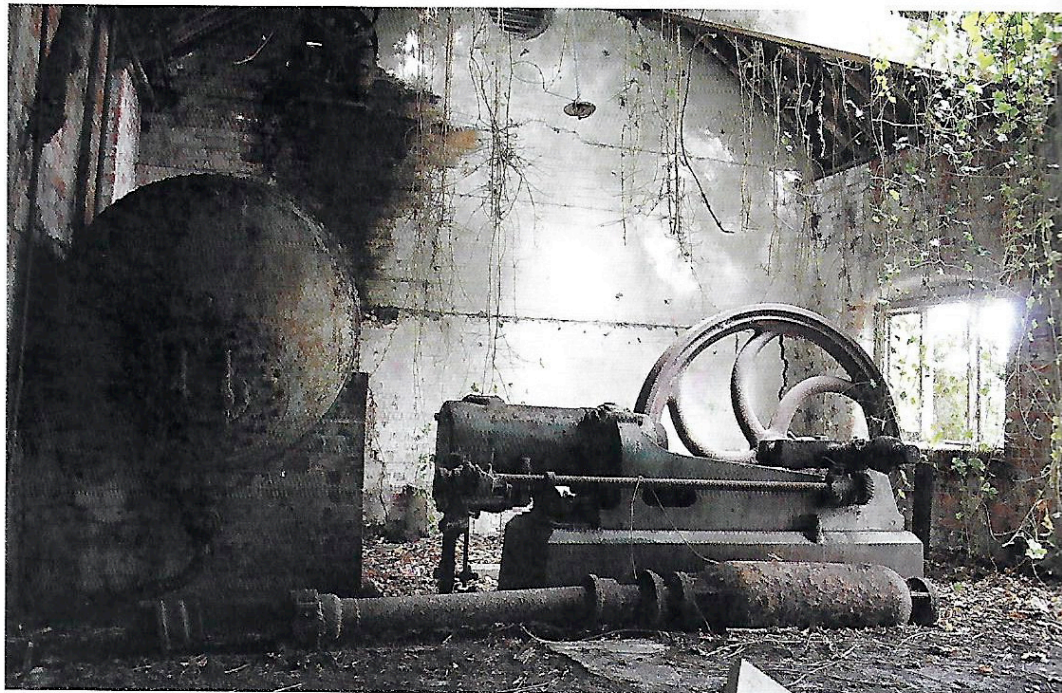


Fig 3.7
Ram pump at Ilam Hall,
Derbyshire. From Blakes
Hydram brochure, c 1921.



Fig 3.9
The Italianate water tower,
Cliveden. Water was piped
to tanks in the tower from a
farm on the far side of the
River Thames by steam-
powered pumps.

*Fig 3.10
Part of the ruined
waterworks, Ascott, with a
water pump powered by an
oil engine.*

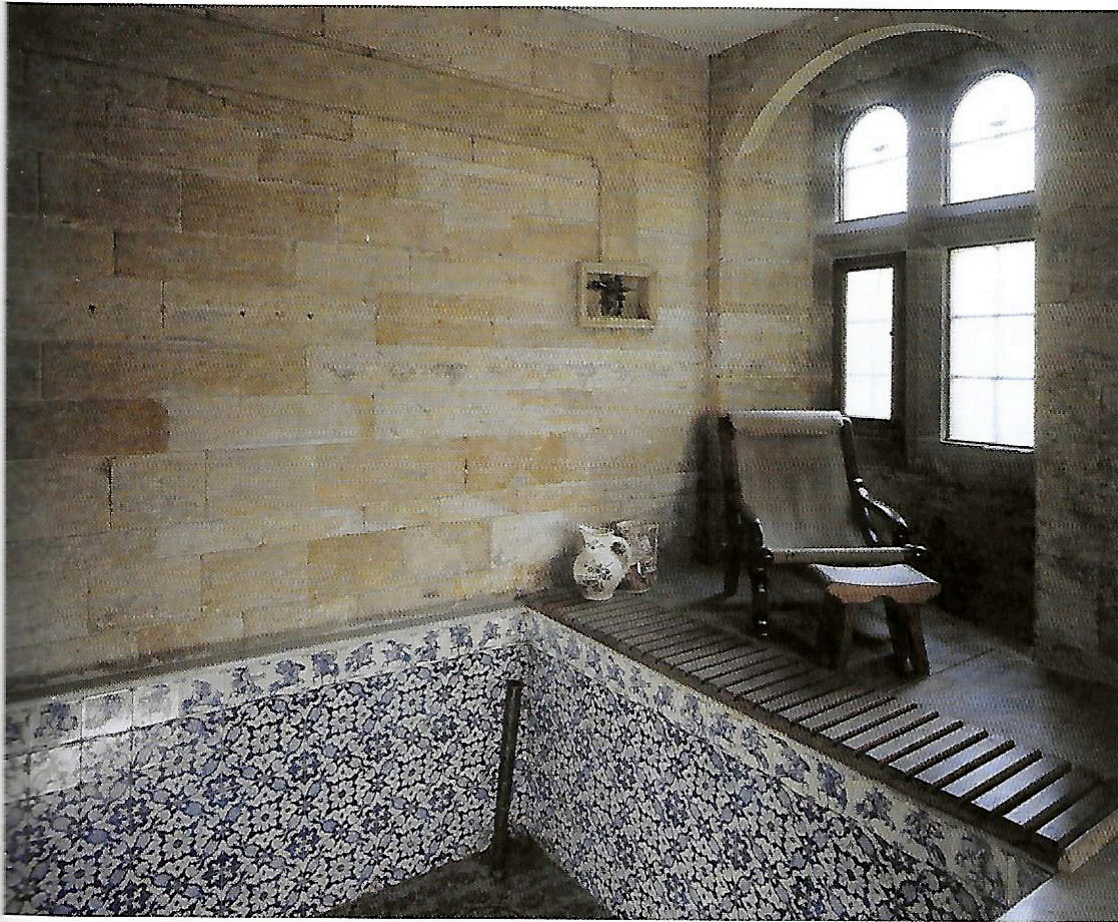


*Fig 3.12
The Coal Gallery on the
second floor at Audley End,
with a 19th-century copper
for hot water supplies and
bins for storing coal, which
was raised from the
gardens below by a hoist.*



*Fig 3.11
A marble basin, or
'buffet', moved to Lady
Chesterfield's bathroom
in the 1920s.*





*Fig 3.16
The plunge bath in the
Turkish bath suite at
Cragside.*



*Fig 3.19
The tin bath in the Silk
Dressing Room at Tatton
Park. The bath was filled by
maids with hot water and it
was kept warm by a firebox
at the bottom.*

DOMESTIC SANITARY REGULATIONS.

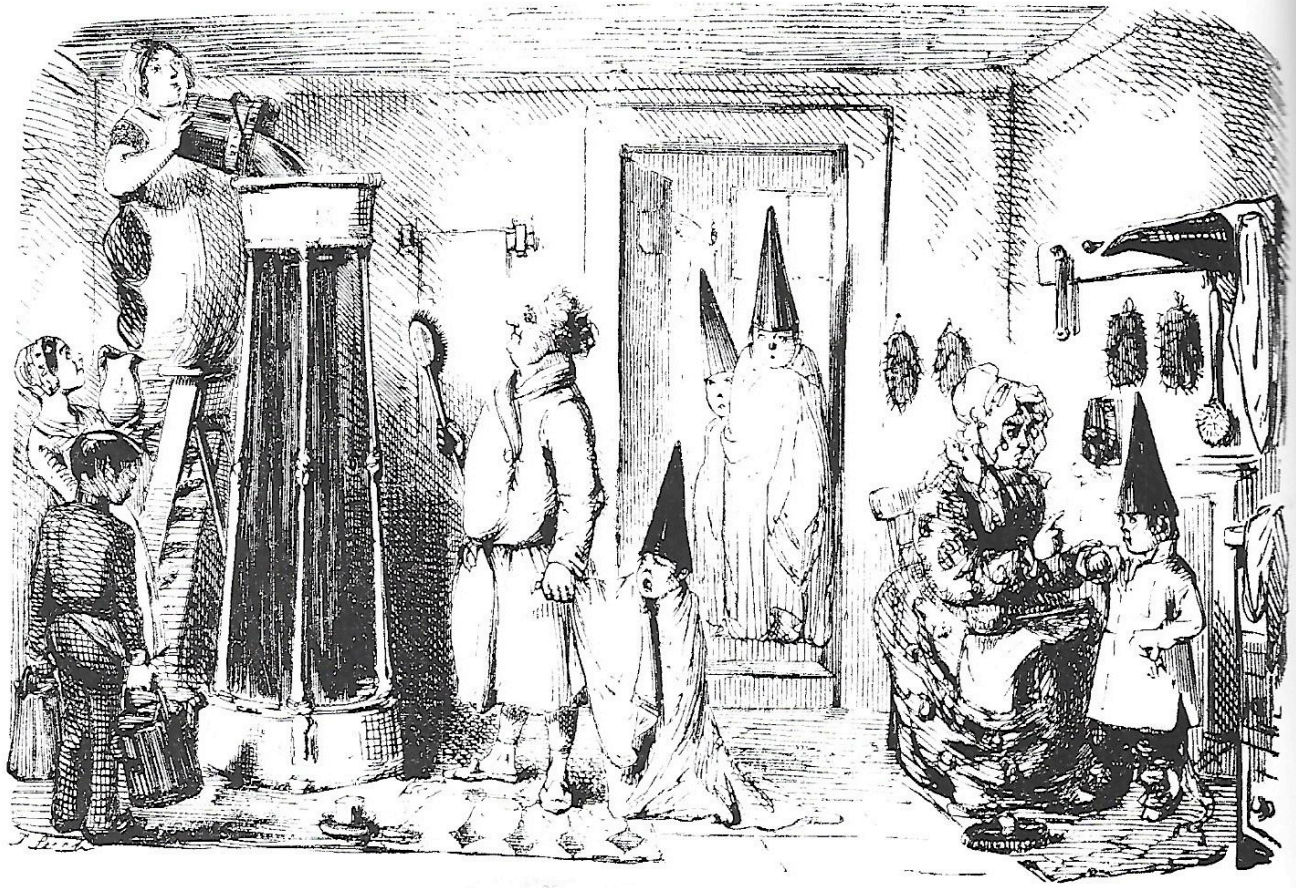


Fig 3.17
*'Domestic Sanitary
Regulations', by
John Leech, Punch,
January 1850.*

Fig 3.36
*Drying cabinets in the dry
laundry, Berrington Hall.*





Fig 3.21
A combined bath and
shower made by John
Bolding, at Castle Drogo.

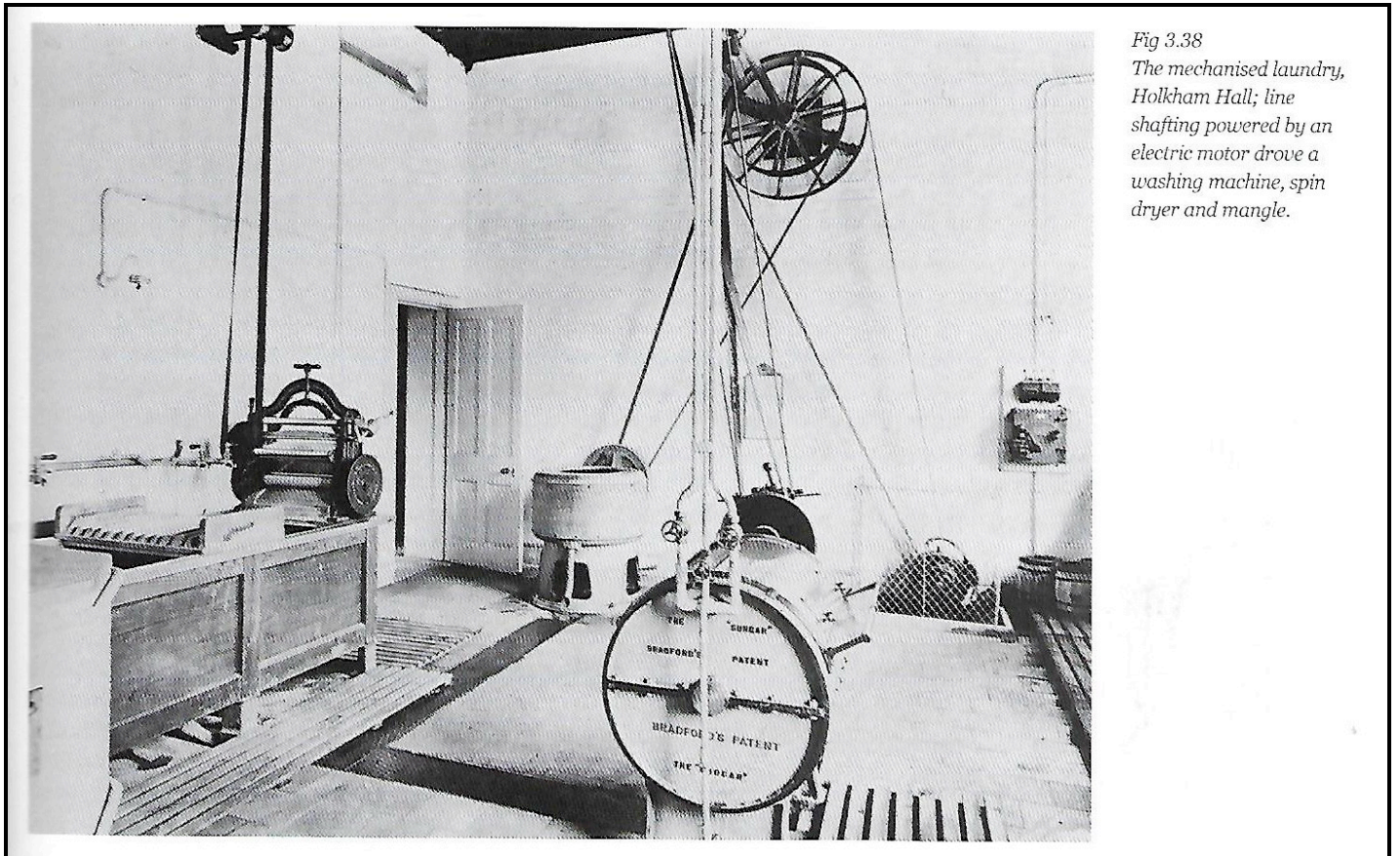


Fig 3.38
The mechanised laundry,
Holkham Hall; line
shafting powered by an
electric motor drove a
washing machine, spin
dryer and mangle.



Fig 3.34
Sinks with sloping fronts, in
the wet laundry, Killerton.

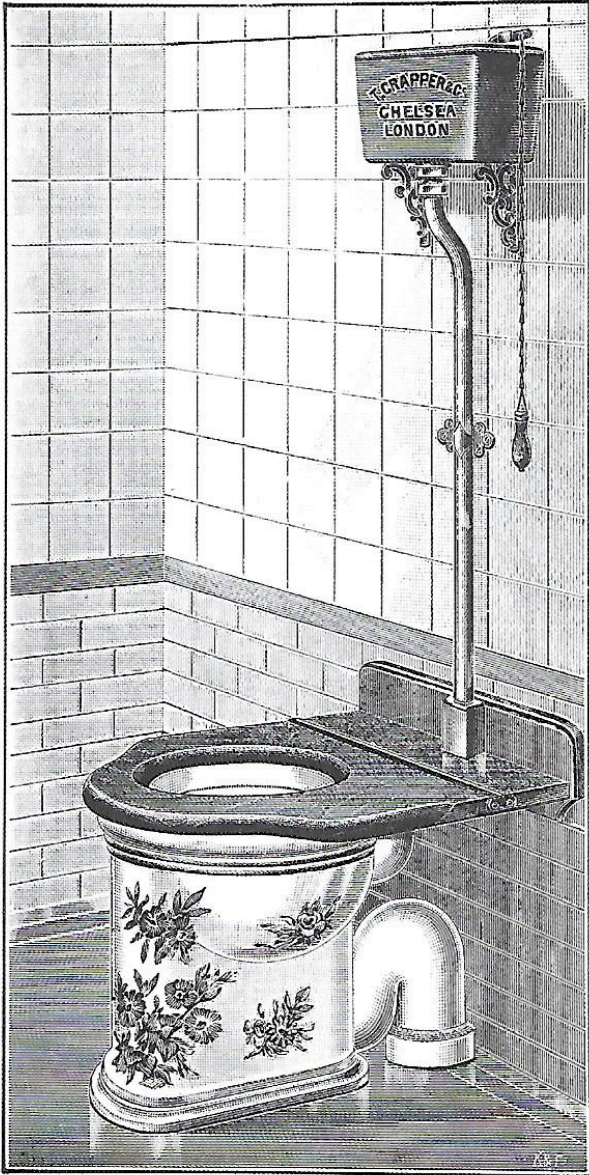


Fig 3.35
The double-height dry
laundry, Beningbrough
Hall, with drying racks,
a box mangle, ironing
table and a stove for
heating flat irons.

Pedestal Wash-down Closets.

The "Invictas."

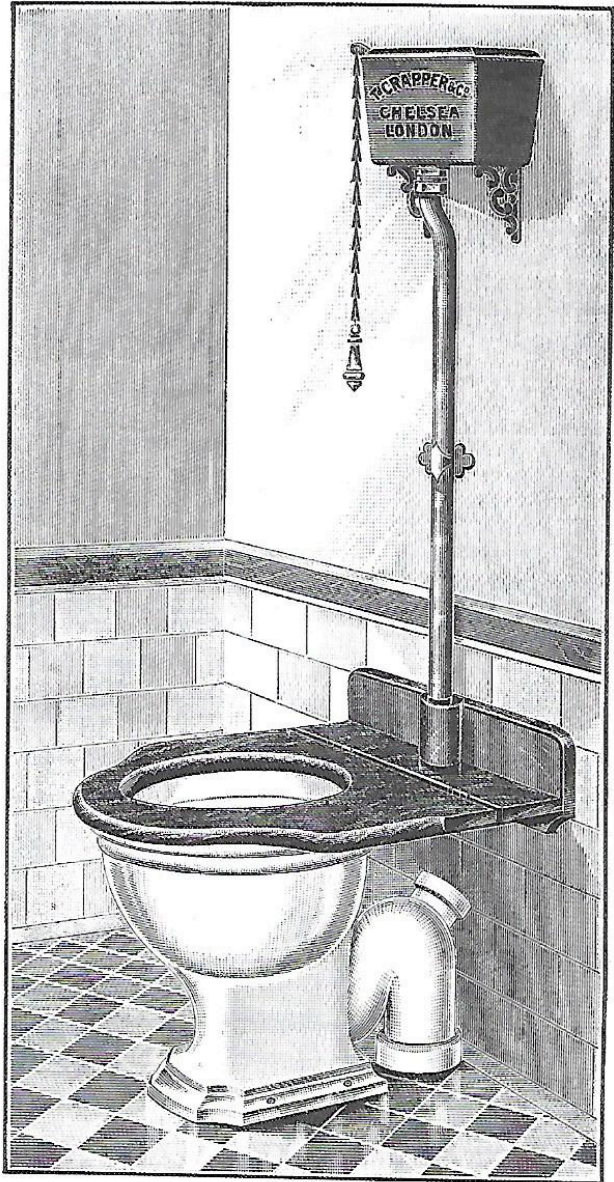
Combination No. 5.



No. 5 Combination, comprising White and Printed "Invictas" Closet, with Fig. 211 Polished Mahogany Seat and Back Board, and 2 Gallon Fig. 219 Water Waste Preventer with 1½ in. Fittings, and China Pull and Brackets ... £3 6 3

The "Lennox."

Combination No. 6.



No. 6 Combination, comprising Strong Cane & White Fire-Clay "Lennox" W.C. £1 0 6
 Fig. 211 Polished Mahogany Seat with Back Board 1 1 3
 2 Gallon Fig. 814 Valveless Water Waste Preventer with Cover, and China Pull 1 2 3
 Iron Brackets 0 1 0
 £3 5 0